



SAFETY COMPLIANCE & TRAINING LLC

EHS Facility Inspection

Location

Submitted By  [Santiago Talamantez](#)

Location was not collected for this report.

Started On

Weather NaN°,

Version V1 (latest)

Updated

Report No.

EHS Facility Inspection

GENERAL DETAILS

Date of Inspection

Division

Office Location

SAFETY SIGNS & POSTINGS

The federal or state OSHA workplace poster is displayed in a visible location for all employees: **No**

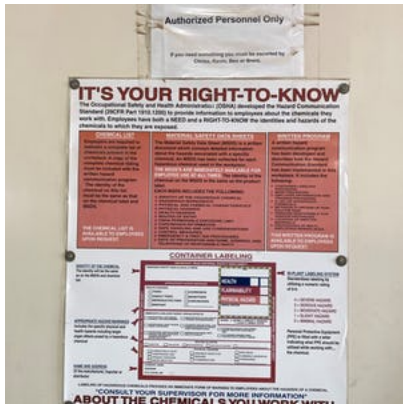
OSHA 300A posted during required time period: N/A

Emergency phone numbers and procedures posted: **No**

Employee communication board updated: **No**

Office has conducted at least one practice emergency evacuation drill in previous 12-month period: **No**

Safety Signs & Postings: Comments / Notes
1) EAP will be developed and posted
2) OSHA posters will be posted when received



HazComm poster needs to be replaced with post GHS updated information.

FIRE PROTECTION & SAFETY

Fire extinguishers are accessible and securely mounted:

No

Fire extinguishers have annual service tag and monthly inspection tag:

Yes

Fire extinguishers are fully charged and not damaged:

Yes

Inspection tags are legible and completed (initials, dates):

Yes

Fire extinguishers locations marked (arrow stickers):

No

No accumulations of combustible wastes in corners and under stairways (pallets, cardboard, wood, shrink wrap, etc.):

Yes

Smoking is prohibited where flammables are located:

Yes

Flammables are stored and handled in approved containers:

Yes

Oily rags disposed of in approved containers:

Yes

Employees trained to use fire protection equipment:

No

Fire Protection & Safety: Comments / Notes

- 1) All annual inspections expire this month, Ben will have them renewed.
- 2) Obstructed paths to extinguishers need to be cleared.
- 3) Discussion will be made for having practical extinguisher training.



Missing location marking, will be ordered.



Obstructed path to extinguisher, north side of shop.



Same extinguisher had extension cord wrapped around.



Obstructed path to extinguisher. I discussed the location of this with Rocky and it was removed. The other three extinguishers in the shop satisfy the 75 ft travel distance required.



Rags stored in approved container.

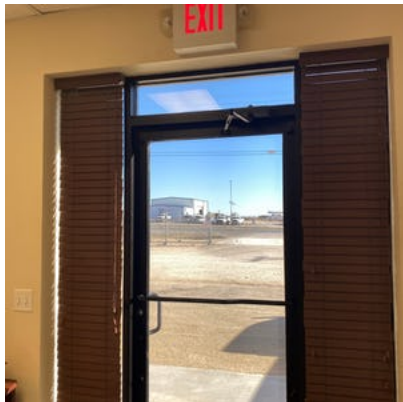
EXITS & EGRESS

Emergency lighting has been tested and is operable: No

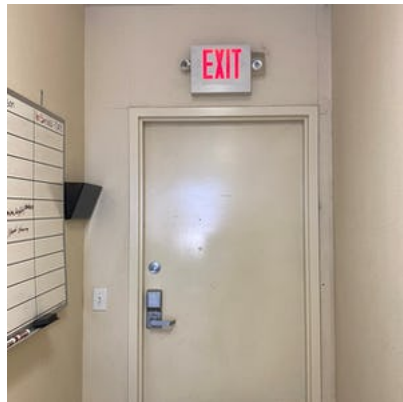
Evacuation maps posted throughout facility or visible to all employees: No

Exits are marked with illuminated exit signs. (This may include external illumination or UL-listed self-luminous exit signs.): Yes

Exit signs connected to or provided with a battery operated illumination source have been inspected, tested, and maintained at least once per month:	N/A
Egress paths leading to exits are obvious or are marked with illuminated directional signs:	N/A
Doors, passages, and stairways that are not exits are marked as "NOT AN EXIT" or as the room (e.g., closet):	Yes
Exit doors are unlocked and free of obstructions:	Yes
The means of egress including aisles and passageways are clear and free of trip hazards:	Yes
Materials (including merchandise, equipment, forklifts, etc.) are not stored adjacent to exit doors in a way they could block the doorway:	Yes
Exits & Egress: Comments / Notes	1) Office has all exits and non-exits marked. 2) Emergency lighting on exit signs is inoperable, Ben will have them checked.



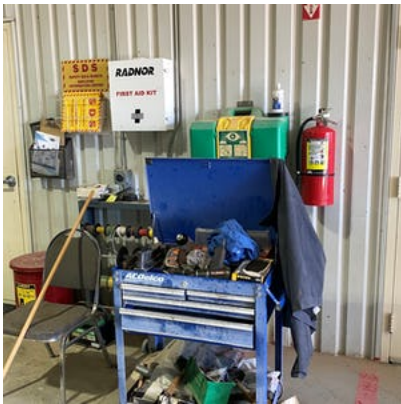
Lighted exit sign illuminating path. Emergency lighting tested, but inoperable.



Non-exit properly marked.

EYEWASH & FIRST AID

Eyewash stations (either plumbed or 15 minutes continuously flowing) are clean, clear, and easily accessible with signs or placards noting the location:	No
Eyewash stations are full of clean water (if applicable, sanitizer solution):	Yes
Eyewash station has inspection tag and notes dates / initials:	No
Eyewash bottles are full and not expired:	N/A
Water and sanitizer in eyewash stations is changed every six months or refilled immediately after use:	N/A
The spouts of eyewash stations are covered and in good condition:	Yes
For hard-plumbed eyewash and / or shower stations, the unit (s) flow as intended:	N/A
First aid kit(s) are available, accessible, fully stocked and clearly marked:	No
First aid kit(s) free of expired, used, or damaged items:	No
Eyewash & First Aid Comments / Notes:	Ben is going to set up the fire extinguisher company and safety company to take care of the inspections and refilling the kit.



Obstructed path to eyewash station, first aid kit, and fire extinguisher. Equipment should not be placed directly in front of emergency supplies. Eyewash station water needs to be changed out and an inspection tag will be placed on it.



First aid kit needs to be restocked, had expired items.

ELECTRICAL

120 volt tools and equipment tested and color-coded?	Yes
Extension cords heavy duty, 3-wire type?	Yes
Extension cords are not being used for permanent wiring and are not run under carpets / rugs or across doorways:	Yes

No extension or power cords have missing grounding prongs or frayed, exposed wires:	No
All damaged cords removed from use?	Yes
Electrical panels are clear of storage and are accessible:	No
Electrical switches, outlets, and junction boxes are covered and no wires are exposed:	Yes
Electrical panels are equipped with a door; the circuits are labeled and all breakers are in place or holes are filled with blanks:	Yes
Ground Fault Circuit Interrupters (GFCIs) are used with electrical wiring in wet areas of the facility:	N/A
Welders and stationary equipment properly grounded?	N/A
Sufficient lighting to work and move safely?	Yes
Lockouts used to de-energize operational systems?	No
Electrical: Comments / Notes	<i>None</i>



Ice machine wiring exposed post maintenance, proper lockout / tagout should be completed on any serviced machine or equipment.



Compressor wiring exposed, needs to have the manufacturer's cover placed back on.



Extension cord missing ground prong.



Obstructed path to breaker panel. Panel cover not closed.

MATERIAL STORAGE & HANDLING

Storage areas kept clear of scrap, debris, and trash? Yes

Materials stored neatly in stacks or piles? Yes

Cylindrical materials racked or cribbed and blocked? N/A

Loose materials containerized or palletized? Yes

Wooden pallets are in good condition (no protruding slats and/or bottom boards, and no protruding nails): Yes

Palletized products are banded or shrink-wrapped to the pallet where appropriate:	N/A
Pallets of product or merchandise are centered between the beams of racking:	N/A
Heavy products are stored on the appropriately sized beam or on the floor:	Yes
Products in racking appear to be fully supported and are not leaning:	Yes
There are no crushed or torn boxes in stacks of product:	Yes
Stacks or pallets of product in racking do not exceed 8' in height:	Yes
Ladders, doors and other vertically stored merchandise are secured against falling using cables or chains. Bungee cords are not acceptable:	Yes
Aisle space maintained around stored materials?	Yes
Items in pick locations are stored securely:	Yes
Flammable liquids are not stored on wooden decking:	Yes
Incompatible materials in storage and/or in use must be separated by a non-combustible partition or by storage in separate hazardous material storage cabinets:	No
Material Storage & Handling: Comments / Notes	None

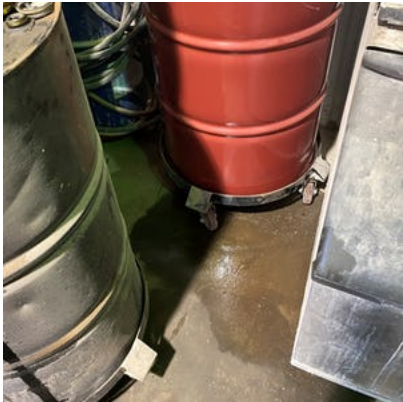


Flammables cabinet is clean and organized. SDS book present.

HOUSEKEEPING

All work areas are clean and orderly. Power tools and cords are secured, and other tools and materials are stored neatly: Yes

Floors are free from debris including stretch-wrap, cardboard, empty pallets, dunnage, etc:	Yes
Work surfaces and floors are kept dry or appropriate means are taken to ensure the surfaces are slip-resistant:	Yes
Toilets, washing facilities, and break areas/rooms are clean and sanitary:	Yes
Liquid spills cleaned up immediately:	No
Housekeeping: Notes / Comments	None



Small spill under bulk lubricant barrels.



Flammable materials being stored near a heat-producing source. Moved to separate area.



Bulk diesel tank has torn placards. Need to have O'Rourke replace them.



Propane storage tank for houses also missing markings and NFPA decal. Will talk to WTG about placing them on.

WALKING & WORKING SURFACES

Aisles and passageways are clear and free of trip hazards:	Yes
Pits, floor openings, and holes in the floor or other working surfaces are covered or otherwise guarded:	Yes
Mezzanines must have load ratings posted:	N/A
Gates are kept closed (properly guarded) except when in use:	N/A

Guardrails are present and in good condition: N/A

Walking & Working Surfaces: Comments / Notes Shop is fairly organized but could use a cleaning and some racks for storing excess items.



Walkway clear and items stored inside marked travel lane.

PERSONAL PROTECTIVE EQUIPMENT (PPE)

Hard hats worn by all personnel in work areas: N/A

Eye and face protection worn as required: No

Respiratory protection worn as required? N/A

Hearing protection worn as required? N/A

Protective footwear is worn when required: N/A

Safety harnesses and lanyards worn for fall protection? N/A

Workers dressed properly for the job? Yes

Personal protective equipment in good condition? Yes

Leather or cut-resistant gloves are worn when handling sharp or abrasive items, or when using knives: Yes

Chemical resistant gloves worn when working with fuels, solvents, acids, cleaners, glues, etc: N/A

Disposable PPE is discarded when dirty, damaged, or expired: Yes

Shaded welding helmets worn when conducting hot work operations: N/A

Personal Protective Equipment: Comments / Notes None

Photos None

LADDERS

Ladders in good condition and stored properly:	Yes
Ladder brake works properly when activated:	Yes
Ladders have inspection tags and regularly inspected prior to use:	No
Damaged ladders placed out of service with tag or lock:	Yes
Ladders: Comments / Notes	1) Ordered ladder inspection tags for all locations.



Inspection tags will be placed. Ladders are clean and in working order.

HAND & POWER TOOLS

Power tools are fitted with guards and safety switches:	Yes
Cords and hoses are kept in good condition:	Yes
Power tool cords are equipped with grounding pins on plugs:	Yes
Power tool cords and plugs in good condition:	Yes
Hand tools are sharp and in good condition:	Yes
Rotating / moving parts of equipment are guarded are functional:	Yes
Saw blades are sharp and in good condition (no missing teeth):	N/A
There is no accumulation of sawdust and/or cuttings in the area:	N/A
Area surrounding the machine, including the operator's area, are free of obstructions, oil residue, leaks and overspray:	Yes
Broken tools repaired or replaced as needed:	Yes
Hand & Power Tools: Comments / Notes	None
Photos	None

GRINDERS

Grinders are securely mounted to a stable surface: N/A

The tongue guard is within 1/4" of the grinding: Yes

The tool rest is within 1/8" of the grinding wheel: Yes

The outer wheel guard is in place: Yes

The power transmission cover is securely in place: Yes

The grinding wheels are in good condition with no visible cracks or missing chunks: Yes

Grinders: Comments / Notes None

Photos None

LIFT EQUIPMENT SAFETY

Daily lift equipment checklists are being completed for each piece of equipment: No

Forklifts and related equipment (attachments, etc.) in good condition: No

Daily lift equipment checklists are completed (for days being used): No

Lift equipment licenses are kept in the operator's possession: N/A

Only trained, licensed operators are operating lift equipment: N/A

Lift equipment operators are wearing seatbelts: N/A

Out-of-Service tags are being used for lift equipment: N/A

Running cables inspected and in good condition: None

Slings and chokers in good condition: N/A

Chain falls and come-a-longs in good condition: N/A

Hoisting hooks have safety latches: N/A

Load limits marked on all hoisting rigs: N/A

Workers move from under suspended loads: N/A

**Lift Equipment Safety:
Comments / Notes**

- 1) No load operations were being conducted, however forklift has been used to material movement.
- 2) A daily checklist book will be ordered and required to be completed by authorized and trained operators.
- 3) Forklift is missing markings for operation (gears, lights, manufacturer ratings). This will take some work to be operationally compliant from the manufacturer's replacement items.
- 4) Training also needs to be checked.



BATTERY CHARGING STATION

The battery charging area is clean and accessible: N/A

Battery charging cables are in good condition (no frays, cuts, or exposed wires): N/A

Battery chargers are free from damage and are protected from vehicular impact: N/A

A fully charged and functioning fire extinguisher is located in close proximity to the charging area: N/A

Eyewash and first aid equipment is located in close proximity of the charging area: N/A

There is a stocked spill kit in close proximity of the charging area: N/A

Goggles, face shield, chemical resistant gloves, and aprons are available: N/A

Any battery acid, hydraulic fluid, oils, or other materials that have been spilled in the charging area are promptly cleaned up: N/A

**Battery Charging Station:
Comments / Notes** There is no designated charging area.

Photos None

COMPRESSED GAS

Valve protectors are in place and on cylinders when cylinders are not being used: No

All valves closed on unused cylinders:	Yes
Cylinders are stored upright in the appropriate storage carts or areas (chains, cages, etc.):	No
Cylinders are legibly marked to clearly identify the contents:	Yes
Cylinders are kept clean and are protected from impact:	No
Compressed gas cylinders are stored in areas protected from external heat sources:	Yes
Propane tanks are stored in a locked cage outside of the building:	N/A
A 20 lbs fire extinguisher is mounted in close proximity to the outside propane tank storage area:	N/A
Compressed gas cylinders are segregated (i.e., oxygen from acetylene, full from empty, etc.) and stored:	N/A
Compressed air hoses, couplings and gauges in good working condition; hoses over 30 psi are equipped with a safety tip:	Yes
Compressed Gas: Comments / Notes	<i>None</i>



Unused cylinders not protected from falling /
Unused cylinder missing cap

WELDING & CUTTING

Welding leads in good condition:	N/A
Welding blankets used to protect materials and equipment:	N/A
Fire watch posted:	N/A
Proper permits issued (as required):	N/A
Fire extinguisher in close proximity to hot work area:	N/A

Welding & Cutting: Comments / Notes	No hot work operations being conducted.
Photos	None

SUMMARY

Inspection Comments	Shop is clean and has a few minor discrepancies that will be corrected in the future.
Inspection Performed By	Santiago Talamantez

Inspector Signature