



SAFETY COMPLIANCE & TRAINING LLC

EHS Facility Inspection **Location**

Submitted By  [Santiago Talamantez](#)

Location was not collected for this report.

Started On

Weather NaN°,

Version V2 (latest)

Updated

Report No.

EHS Facility Inspection

GENERAL DETAILS

Date of Inspection

Division

Office Location

SAFETY SIGNS & POSTINGS

The federal or state OSHA workplace poster is displayed in a visible location for all employees: Yes

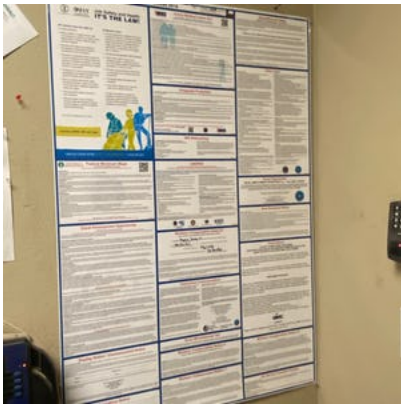
OSHA 300A posted during required time period: N/A

Emergency phone numbers and procedures posted: No

Employee communication board updated: Yes

Office has conducted at least one practice emergency evacuation drill in previous 12-month period: No

Safety Signs & Postings: Comments / Notes Office needs EAP developed and posted.



OSHA poster properly displayed.

FIRE PROTECTION & SAFETY

Fire extinguishers are accessible and securely mounted:

No

Fire extinguishers have annual service tag and monthly inspection tag:

Yes

Fire extinguishers are fully charged and not damaged:

Yes

Inspection tags are legible and completed (initials, dates):

Yes

Fire extinguishers locations marked (arrow stickers):

Yes

No accumulations of combustible wastes in corners and under stairways (pallets, cardboard, wood, shrink wrap, etc.):

Yes

Smoking is prohibited where flammables are located:

Yes

Flammables are stored and handled in approved containers:

Yes

Oily rags disposed of in approved containers:

Yes

Employees trained to use fire protection equipment:

No

Fire Protection & Safety: Comments / Notes

Shop has two separate flammable storage cabinets. Move any obstructions to extinguishers provided for employee use.



Material storage in front of extinguisher.



Obstructed path to extinguisher / Improper storage location for propane tank



Obstructed path to extinguisher / Slip hazard with excess water from faucet



Oily rags stored in approved non-flammable container.

EXITS & EGRESS

Emergency lighting has been tested and is operable: N/A

Evacuation maps posted throughout facility or visible to all employees: No

Exits are marked with illuminated exit signs. (This may include external illumination or UL-listed self-luminous exit signs.): No

Exit signs connected to or provided with a battery operated illumination source have been inspected, tested, and maintained at least once per month: No

Egress paths leading to exits are obvious or are marked with illuminated directional signs: No

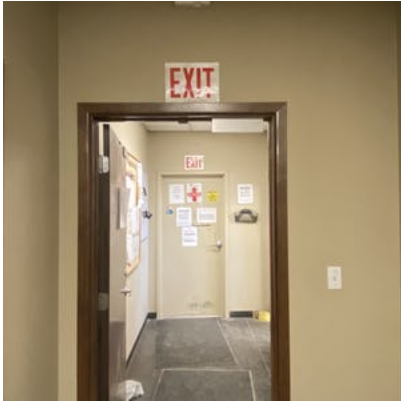
Doors, passages, and stairways that are not exits are marked as "NOT AN EXIT" or as the room (e.g., closet): No

Exit doors are unlocked and free of obstructions: Yes

The means of egress including aisles and passageways are clear and free of trip hazards: Yes

Materials (including merchandise, equipment, forklifts, etc.) are not stored adjacent to exit doors in a way they could block the doorway: Yes

Exits & Egress: Comments / Notes There are only two non-illuminated exit signs in the office. All other doors are unmarked. Signs have been ordered and will be installed.



Non-illuminated signs between shop door and dispatch door.



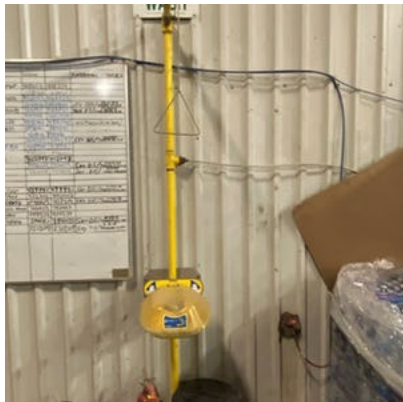
EYEWASH & FIRST AID

Eyewash stations (either plumbed or 15 minutes continuously flowing) are clean, clear, and easily accessible with signs or placards noting the location:

No

Eyewash stations are full of clean water (if applicable, sanitizer solution):	N/A
Eyewash station has inspection tag and notes dates / initials:	No
Eyewash bottles are full and not expired:	N/A
Water and sanitizer in eyewash stations is changed every six months or refilled immediately after use:	N/A
The spouts of eyewash stations are covered and in good condition:	No
For hard-plumbed eyewash and / or shower stations, the unit (s) flow as intended:	Yes
First aid kit(s) are available, accessible, fully stocked and clearly marked:	Yes
First aid kit(s) free of expired, used, or damaged items:	No

Eyewash & First Aid Comments / Notes: The eyewash station is marked, however all items placed around it need to be moved. The spouts are not dispersing water sufficient for eye flushing.



Items stored too close to station need to be moved.



Spouts not dispersing fluid correctly.



First aid kit fully stocked, only had first aid cream expired and will be replaced.

ELECTRICAL

120 volt tools and equipment tested and color-coded? N/A

Extension cords heavy duty, 3-wire type?	Yes
Extension cords are not being used for permanent wiring and are not run under carpets / rugs or across doorways:	Yes
No extension or power cords have missing grounding prongs or frayed, exposed wires:	Yes
All damaged cords removed from use?	No
Electrical panels are clear of storage and are accessible:	No
Electrical switches, outlets, and junction boxes are covered and no wires are exposed:	Yes
Electrical panels are equipped with a door; the circuits are labeled and all breakers are in place or holes are filled with blanks:	Yes
Ground Fault Circuit Interrupters (GFCIs) are used with electrical wiring in wet areas of the facility:	N/A
Welders and stationary equipment properly grounded?	N/A
Sufficient lighting to work and move safely?	Yes
Lockouts used to de-energize operational systems?	Yes
Electrical: Comments / Notes	None



Electric breaker panel door unsecured / Incompatibility storage of flammables next to electrical sources



Damaged generator cord.



Extension cord protected in travel space.

MATERIAL STORAGE & HANDLING

Storage areas kept clear of scrap, debris, and trash? No

Materials stored neatly in stacks or piles? Yes

Cylindrical materials racked or cribbed and blocked? Yes

Loose materials containerized or palletized? No

Wooden pallets are in good condition (no protruding slats and/or bottom boards, and no protruding nails): Yes

Palletized products are banded or shrink-wrapped to the pallet where appropriate: N/A

Pallets of product or merchandise are centered between the beams of racking: N/A

Heavy products are stored on the appropriately sized beam or on the floor: Yes

Products in racking appear to be fully supported and are not leaning: Yes

There are no crushed or torn boxes in stacks of product: Yes

Stacks or pallets of product in racking do not exceed 8' in height:	Yes
Ladders, doors and other vertically stored merchandise are secured against falling using cables or chains. Bungee cords are not acceptable:	Yes
Aisle space maintained around stored materials?	Yes
Items in pick locations are stored securely:	Yes
Material Storage & Handling: Comments / Notes	Parts storage are needs a thorough cleaning and reorganizing.



Opened-end boxes facing personnel travel area. Need to be placed upright or facing inward towards wall.

HOUSEKEEPING

All work areas are clean and orderly. Power tools and cords are secured, and other tools and materials are stored neatly:	No
Floors are free from debris including stretch-wrap, cardboard, empty pallets, dunnage, etc:	Yes
Work surfaces and floors are kept dry or appropriate means are taken to ensure the surfaces are slip-resistant:	No
Toilets, washing facilities, and break areas/rooms are clean and sanitary:	No
Liquid spills cleaned up immediately:	No
Housekeeping: Notes / Comments	Shop had several spills that need to be cleaned up to eliminate existing slip, trip, and fall hazards.



Restroom facilities could use cleaning. Unmarked container with liquid.

HAZARD COMMUNICATION

Flammable liquids are not stored on wooden decking: Yes

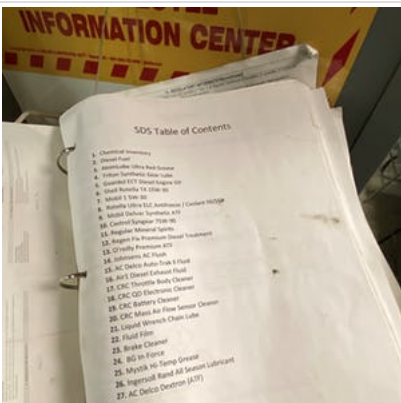
Incompatible materials are not being stored together: Yes

An approved metal storage cabinet is available for storing of combustible materials: Yes

SDS book is available and up to date: Yes

All materials have manufacturer's original labels and markings: Yes

No unmarked containers have liquid or solid material present: No



SDS book present and updated.

WALKING & WORKING SURFACES

Aisles and passageways are clear and free of trip hazards:	No
Pits, floor openings, and holes in the floor or other working surfaces are covered or otherwise guarded:	Yes
Mezzanines must have load ratings posted:	N/A
Gates are kept closed (properly guarded) except when in use:	Yes
Guardrails are present and in good condition:	N/A
Walking & Working Surfaces: Comments / Notes	Walkway in storage area could have a clearer path with items stored on the floor moved.
Photos	None

PERSONAL PROTECTIVE EQUIPMENT (PPE)

Hard hats worn by all personnel in work areas:	N/A
Eye and face protection worn as required:	No
Respiratory protection worn as required?	N/A
Hearing protection worn as required?	No
Protective footwear is worn when required:	Yes
Safety harnesses and lanyards worn for fall protection?	N/A
Workers dressed properly for the job?	Yes
Personal protective equipment in good condition?	Yes
Leather or cut-resistant gloves are worn when handling sharp or abrasive items, or when using knives:	Yes
Chemical resistant gloves worn when working with fuels, solvents, acids, cleaners, glues, etc:	Yes
Disposable PPE is discarded when dirty, damaged, or expired:	Yes
Shaded welding helmets worn when conducting hot work operations:	N/A
Personal Protective Equipment: Comments / Notes	No set criteria has been set for proper PPE use in the shop. We will discuss this and set forth a plan.



Improper storage of fall protection equipment.

LADDERS

Ladders in good condition and stored properly: N/A

Ladder brake works properly when activated: N/A

Ladders have inspection tags and regularly inspected prior to use: N/A

Damaged ladders placed out of service with tag or lock: N/A

Ladders: Comments / Notes None

Photos None

HAND & POWER TOOLS

Power tools are fitted with guards and safety switches: Yes

Cords and hoses are kept in good condition: Yes

Power tool cords are equipped with grounding pins on plugs: Yes

Power tool cords and plugs in good condition: Yes

Hand tools are sharp and in good condition: N/A

Rotating / moving parts of equipment are guarded are functional: Yes

Saw blades are sharp and in good condition (no missing teeth): N/A

There is no accumulation of sawdust and/or cuttings in the area: N/A

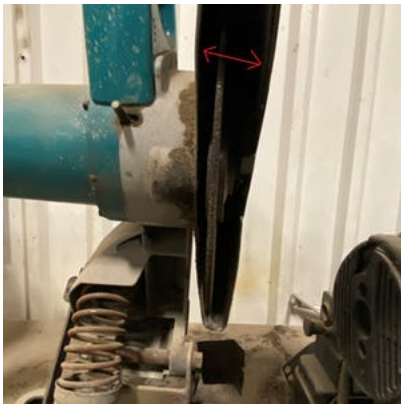
Area surrounding the machine, including the operator's area, are free of obstructions, oil residue, leaks and overspray: N/A

Broken tools repaired or replaced as needed: Yes

Hand & Power Tools: Comments / Notes	I checked most tools and machines and all appeared clean and operational.
Photos	None

GRINDERS

Grinders are securely mounted to a stable surface:	No
The tongue guard is within 1/4" of the grinding:	Yes
The tool rest is within 1/8" of the grinding wheel:	Yes
The outer wheel guard is in place:	Yes
The power transmission cover is securely in place:	Yes
The grinding wheels are in good condition with no visible cracks or missing chunks:	Yes
Grinders: Comments / Notes	<i>None</i>



Outer guard is a little loose, creating more an 1/4" movement left and right. Just needs to be tightened.

LIFT EQUIPMENT SAFETY

Daily lift equipment checklists are being completed for each piece of equipment:	No
Forklifts and related equipment (attachments, etc.) in good condition:	N/A
Daily lift equipment checklists are completed (for days being used):	No
Lift equipment licenses are kept in the operator's possession:	N/A
Only trained, licensed operators are operating lift equipment:	N/A
Lift equipment operators are wearing seatbelts:	N/A
Out-of-Service tags are being used for lift equipment:	Yes

Running cables inspected and in good condition:	N/A
Slings and chokers in good condition:	N/A
Chain falls and come-a-longs in good condition:	N/A
Hoisting hooks have safety latches:	N/A
Load limits marked on all hoisting rigs:	N/A
Workers move from under suspended loads:	N/A
Lift Equipment Safety: Comments / Notes	No lift operations were being conducted.



BATTERY CHARGING STATION

The battery charging area is clean and accessible:	No
Battery charging cables are in good condition (no frays, cuts, or exposed wires):	Yes
Battery chargers are free from damage and are protected from vehicular impact:	Yes
A fully charged and functioning fire extinguisher is located in close proximity to the charging area:	Yes
Eyewash and first aid equipment is located in close proximity of the charging area:	No
There is a stocked spill kit in close proximity of the charging area:	No
Goggles, face shield, chemical resistant gloves, and aprons are available:	No
Any battery acid, hydraulic fluid, oils, or other materials that have been spilled in the charging area are promptly cleaned up:	Yes

**Battery Charging Station:
Comments / Notes**

The charging area needs additional corrosive resistant PPE.



Battery charging area needs organizing and removing of incompatible combustible materials stored (liquid, cardboard).

COMPRESSED GAS

Valve protectors are in place and on cylinders when cylinders are not being used: No

All valves closed on unused cylinders: Yes

Cylinders are stored upright in the appropriate storage carts or areas (chains, cages, etc.): Yes

Cylinders are legibly marked to clearly identify the contents: No

Cylinders are kept clean and are protected from impact: No

Compressed gas cylinders are stored in areas protected from external heat sources: Yes

Propane tanks are stored in a locked cage outside of the building: N/A

A 20 lbs fire extinguisher is mounted in close proximity to the outside propane tank storage area: No

Compressed gas cylinders are segregated (i.e., oxygen from acetylene, full from empty, etc.) and stored: No

Compressed air hoses, couplings and gauges in good working condition; hoses over 30 psi are equipped with a safety tip: Yes

Compressed Gas: Comments / Notes

There is no specific CG storage area. One should be designated and marked.



Tanks not marked noting specific product. Cylinder not protected from falling.



This set of cylinders has fall protection, middle cylinder is missing cap.



Mobile hot work equipment has proper fall protection and cylinder markings (oxidizer, flammable).

WELDING & CUTTING

Welding leads in good condition: N/A

Welding blankets used to protect materials and equipment: N/A

Fire watch posted: N/A

Proper permits issued (as required): N/A

Fire extinguisher in close proximity to hot work area: N/A

Welding & Cutting: Comments / Notes No hot work operation was being conducted.

Photos None

SUMMARY

Inspection Comments The shop and office have some minor discrepancies we can correct. Nothing major was noted or observed that required immediate attention. I will help the shop personnel correct all.

Inspection Performed By [Santiago Talamantez](#)

Inspector Signature 